

Lack of T1 Nuclear Hyperintensity in Pediatric Patients using a Macrocyclic Gadolinium Contrast Agent: Re-visit & Updated Review

Manzoor Ahmed* and Mohamed Othman Al Madhaani

Department of Radiology, Sheikh Khalifa Medical City, UAE

Article Information

Received date: Aug 02, 2019

Accepted date: Aug 28, 2019

Published date: Sep 02, 2019

*Corresponding author

Manzoor Ahmed, Department of Radiology, Al Karamah Street, Sheikh Khalifa Medical City, PO Box: 51900, Abu Dhabi, UAE, Tel: 971 2 8192282; Email: sohakhan022006@yahoo.com

Distributed under Creative Commons CC-BY 4.0

Keywords Gadolinium; Deposition; Pediatrics; Macrocyclic

Abstract

Purpose

T1 hyperintense dentate nuclei (HDN) and globus pallidi (HGP) has been recently established as markers of Gadolinium deposition in the brain. This has triggered many studies and a safety alert. We aimed to re-validate the safety of a macrocyclic Gadolinium contrast agent in pediatric patients and present an update in view of current literature.

Material & methods

Retrospective selection of pediatric patients who received at least 3 intravenous injections of Gadoterate Meglumine for MRI studies with at least 12 months of retention time. Age matched controls were used. Contoured region of interest (ROI) signal intensity ratios for dentate to pons (DN/P) and globus pallidi to thalami (GP/T) were measured. The difference of ratios from initial to last MRI examination and between case and controls were tested using paired t-test.

Results

21 out of 49 cases qualified the inclusion & exclusion criteria. The average cumulative contrast injections received by cases was about 6.8. Most of the cases received at least 4 injections and 19 was the greatest number of injections received by one case. The average chronologic age of the cases was about 5 years. No statistical difference of signal intensity ratios from initial to last MRI study ($P=0.57$ & $P=0.40$) as well as compared to the controls ($P=39$ & $P=21$).

Conclusions

Multiple contrast enhanced MRI studies can be safely administered macrocyclic Gadolinium agents with no risk of Gadolinium deposition in the brain. Currently, the consensus recommendation is of caution and prevention while favoring macrocyclic agents specifically for pediatric patients. No clear evidence for associated clinical sequela related to Gadolinium deposition.

Introduction

Multiple studies have been recently published, which showed neural deposition of gadolinium as manifested by T1 hyper-intense dentate nuclei (HDN) and T1 hyper-intense globus pallidi (HGP) on follow-up non-enhanced MRI examinations [1-5]. Certainly, there is evidence of deposition in other deeper loci of brain, though in much smaller concentrations, as evidenced by MR imaging [6]. The primary evidence is the presence of nuclear T1 hyper-intensity on MR imaging and unequivocally higher risk of neural deposition when linear gadolinium contrast agents are used [3,7-9]. The deposition is related to intravenous gadolinium administration. However, there is no evidence of deposition after intrathecal administration [10].

These observations have been corroborated by autopsy evaluation via electron microscopy and mass spectroscopy [6,11]. In addition, confounding factors that cause nuclear T1 hyperintensities, such as previous radiation and chemotherapy, have been previously addressed [12,13]. Macrocyclic agents have been shown to result in either minimal or no gadolinium deposition [3]. We want to re-validate the absence of HDN and HGP in pediatric patients with multiple previous intravenous injections of gadoterate meglumine (Guerbet, Netherlands), which is an ionic macrocyclic gadolinium contrast agent and the only gadolinium contrast agent used in our institution for the last nine years.

Our study is of significant interest because there are relatively few pediatric studies in the literature related to this issue [14-19]. Our methodology is specifically tailored towards localization and contouring of dentate nuclei and globus pallidi. In addition, the study subjectively excludes any

intrinsic T1 or T2* signal from other causes. Lastly, this is the first study from the Gulf region of the Middle East. Thus, the variables, such as population and environmental factors, need to be considered in scientific enquiries particularly with regard to patient safety.

Materials and Methods

Case and control selection

This study is an IRB approved retrospective study. The study met the patient's consent waiver exemption.

The inclusion criteria were:

- Pediatric patients < 15 years of chronologic age,
- At least 3 MRI examinations with intravenous administration of gadoterate meglumine,
- At least 12 months of interval between the first and last MRI examination with intravenous contrast agents and,
- Control patients with at least one standard MRI brain examination but no documented history of MRI examination with intravenous injection of gadolinium-based contrast agents (GDCAs).

The exclusion criteria were:

- Any evidence that a case subject had an MRI examination with contrast agents other than gadoterate meglumine,
- A lesion in dentate nuclei, globus pallidi, pons or thalamus.
- Technically sub-optimal examination limiting evaluation of HDN and HGP.
- Subjectively visible HDN and HGP on the first MRI examination.
- Susceptibility in the dentate nuclei and globus pallidi (suggesting hemorrhage or calcification).

A data base search was performed using the institutional electronic medical record (EMR) and picture archiving system (PACS). The search criteria were as follows: a) pediatric patients equal to or less than 15 years of age irrespective of gender and ethnicity; b) available MRI examinations on the PACS for review and analysis. The selection criteria strictly followed the abovementioned inclusion and exclusion requirements.

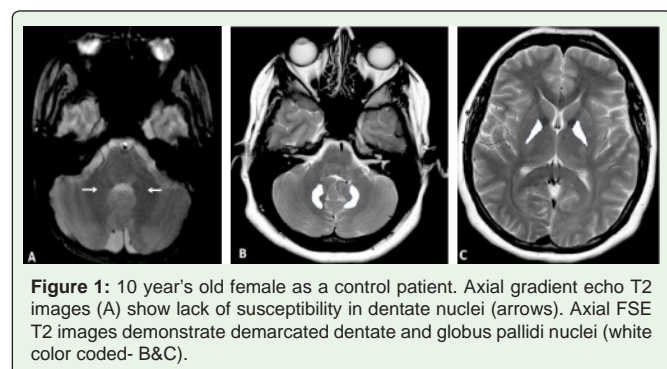


Figure 1: 10 year's old female as a control patient. Axial gradient echo T2 images (A) show lack of susceptibility in dentate nuclei (arrows). Axial FSE T2 images demonstrate demarcated dentate and globus pallidi nuclei (white color coded- B&C).

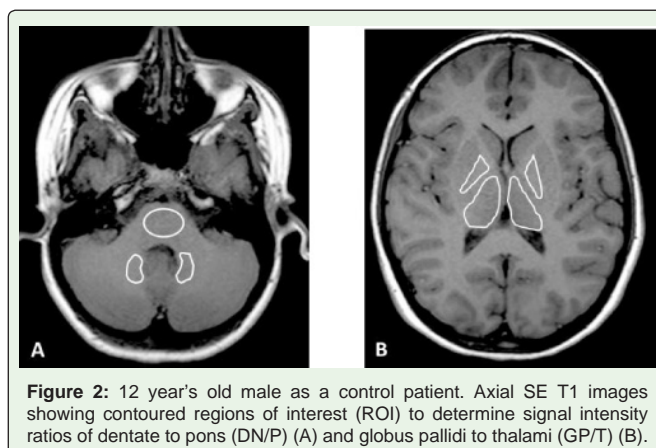


Figure 2: 12 year's old male as a control patient. Axial SE T1 images showing contoured regions of interest (ROI) to determine signal intensity ratios of dentate to pons (DN/P) (A) and globus pallidi to thalami (GP/T) (B).

MRI techniques

All included examinations were performed using 1.5T MRI (Philips, Netherlands), except for 2 cases, the examination of which was performed using 3T MRI (GE, Illinois, USA) in both the subject and the control. The following technique was primarily used for axial T1 SE images using the 1.5T system: (TE-15, TR-500, FA-69, Averages-1, FOV-23 cm, Matrix- 320×288, Display reconstructed slices 4×4.5 mm). The average dose of intravenous gadoterate meglumine received by a subject for individual examination was 0.1 mmol/kg.

MRI Image Review and Analysis

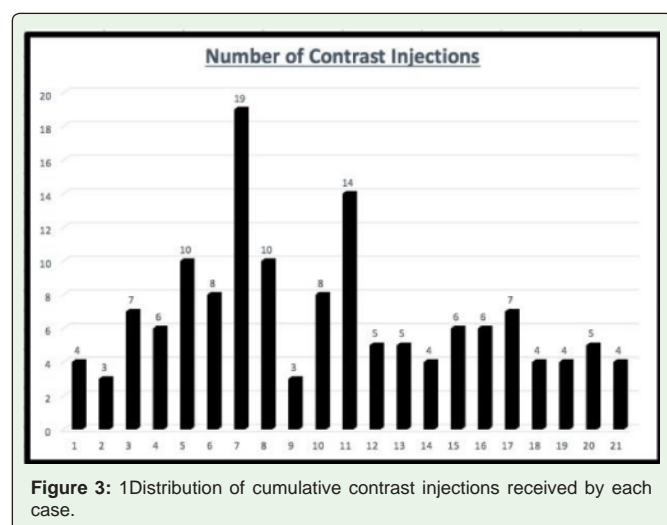
The MRI examinations were reviewed by a board-certified neuro-radiologist. Axial T1 pre-and post-contrast MRI brain images constituted the primary sequence for subjective and objective evaluation of nuclear T1 hyperintensity in the dentate nuclei and globus pallidi.

The reviewer analyzed the non-enhanced axial T1 images from the initial and last examination of the cases and the only included examination of each control subject. Manual ROIs were drawn, centered and contoured to the dentate nuclei (DN), globus pallidi (GP), central pons (P) and thalami (T). These were supplemented by review of axial FSE T2 and GRE T2* or susceptibility-weighted images for the two-fold purpose of identifying the nuclei of interest and ruling out nuclear susceptibility, respectively (Figure 1).

The mean value of signal intensity from each contoured and customized ROI was recorded from each examination followed by calculation of dentate/pons (DN/P) and globus pallidus/thalamus (GP/T) ratios (Fig.2).

Data analysis

Paired t-test was used for statistical data analysis. To compare the T1 signal change, the test required the mean of the difference in ratios (DN/P and GP/T) between the initial and last examinations of the cases. To compare the case and the controls, the test required the mean of the difference of the ratios (DN/P and GP/T) from MRI examinations between the control and case subjects. Standard



deviation and standard error of the mean was followed by t-score calculation to test null hypothesis.

Results

Approximately 49 cases were identified in the data bases, which filtered into 21 cases that strictly met the inclusion and exclusion selection criteria. The control consisted of age-matched 21 individuals who underwent at least one non-contrast MRI brain examination.

The mean number of gadolinium injections received by the individuals was 6.8 (Figure 2,3). All of them received at least 4 or more injections over at least one year span except for two cases. The highest number of cumulative contrast injections received by an individual was 19. The average age of the subjects was approximately 64 months (5 years).

There was no statistical difference in the nuclear T1 signal intensity from initial to last MRI examination by comparing T1 signal ratios of dentate to pons (DN/P) ($P = 0.57$) and globus pallidus to thalamus (GP/T) ($P = 0.40$). As evident in Figure 4, there is no significant deviation from zero in the ratio difference.

There was no statistical difference in the nuclear T1 signal intensity between the last MRI examination of the cases and single MRI examinations of the control subjects by comparing T1 signal ratios for dentate to pons (DN/P) ($P = 0.39$) and globus pallidus to thalamus (GP/T) ($P = 0.21$). As evident in Figure 5, there is no significant deviation from zero in the ratio difference.

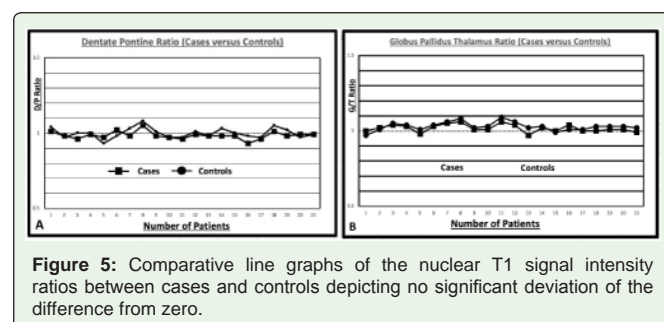
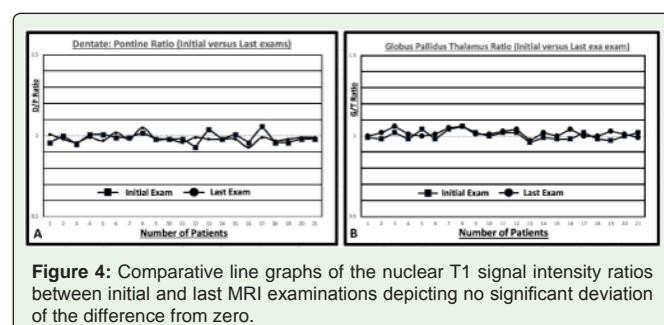
Discussion

Gadolinium, as a chelating agent, has been in use as an exclusive MRI contrast agent for more than 3 decades, acclaiming a high safety profile [20]. Gadolinium deposition in animals has been known [21] but did not translate into a significant risk to the human bodies until the discovery and serious alert of Nephrogenic System Fibrosis (NSF) in 2006, due to gadolinium deposition in patients with chronic renal insufficiency [22,23]. Kanda et al. [1,2] followed by many other authors published landmark papers alerting the medical community

about deposition of gadolinium contrast agents in the deep nuclei of the brain [1-5]. The surrogate marker of gadolinium deposition in this set of literature has been T1 hyperintense dentate nuclei (HDN) and T1 hyperintense globus pallidi (HGP). The evidence clearly shows a much higher risk of deposition with linear GDCAs while the risk is minimal to none with macrocyclic agents [3,4,24,25]. In addition, this has been confirmed in pediatric population [14-16,26].

Linear gadolinium contrast agents include six of the nine gadolinium agents approved for use to enhance MR Imaging. There is a high correlation of nuclear T1 hyperintensity with cumulative administrations of linear agents [1,4,27,28]. Linear agents are less stable. Therefore, T1 hyperintensity, as a marker of gadolinium, negatively correlates with stability of the contrast agents [3]. However, macrocyclic agents, as more stable compounds, fail to show increased or increasing T1 hyperintensity with multiple injections [14,24,25,28]. Though there are many factors influencing the preference for different MR contrast agents, the two major ones include T1 hyperintensity (means contrast enhancement) and lesser adverse effects. However, the advent of “deposition revelation” has re-invigorated the significance of “in-vivo stability” of the agents and, thus, tilted the balance in favor of macrocyclic agents [3,4,7,29,30]. Our study re-attested the unequivocal safety of a macrocyclic agent in terms of neural-deposition in the brain. The study clearly revealed that the T1 signal intensity in the deep nuclei (dentate nuclei of cerebellum and globus pallidus of basal ganglia) in the last MRI examination of each case was not statistically or subjectively different than the T1 signal on initial exam or compared to the control subjects. We made sure that the nuclei are well demarcated and distinguished by the lack of intrinsic T1 signal or susceptibility.

The nuclear accumulation of gadolinium correlates with the number of intravenous injections [2,31]. This translates into



cumulative dose, traces of which can result in neural deposition. However, the cumulative deposition risk is asymmetric with linear agents [7,31]. Radbruch et al. [28] showed lack of significant nuclear T1 hyperintensity in subjects who underwent an average of approximately 23 macrocyclic agent administrations or even up to 52 individual injections in another study [25]. Similar to our results, gadoterate failed to show T1 nuclear hyperintensity in few other studies [14,15]. The average number of administrations of gadoterate in our study was 6.8. Radbruch et al. [14] showed similar results in pediatric patients with the same agent. However, the average number of administrations was approximately 8.6. The largest number of doses received by one of our pediatric patient was 19.

The cases requiring multiple contrast enhanced MRI exams in our study were mostly pediatric gliomas or neurofibromatosis type 1. These pediatric groups of patients who require long term follow-ups with contrast-enhanced MRI examinations are at high risk for deposition of gadolinium in the brain. Certainly, the potential time span for receiving multiple contrast doses is going to be longer in pediatric population. The preference for macrocyclic agents over linear agents can significantly mitigate or nullify this risk. There is an active trend of switching to macrocyclic agents particularly in pediatric hospitals [32]. It is well established that linear agents cause gadolinium deposition in adults and potentially in the pediatric population, though with limited evidence in the pediatric patients [14,16,26]. Nevertheless, the preferential use of macrocyclic agents in pediatrics is already prevalent.

There has been an increasing awareness about the higher risk of gadolinium deposition in patients with renal insufficiency since the discovery of NSF. Similarly, renal function affects the rate of gadolinium deposition in the brain specifically after administration of linear GBCAs. Patients on hemodialysis showed a significantly higher nuclear T1 signal compared with the patients with normal renal function [33-35]. Fortunately, chronic renal diseases are relatively uncommon in pediatric population. None of our subjects were on dialysis.

The main question is the clinical significance of gadolinium deposition in the brain. The mounting literature is resulting in “gadolinium-phobia”. However, to date, there is no solid evidence to argue in favor of clinical toxicity or to directly attribute even minimal clinical stigmata or sequela to gadolinium deposition. Perrotta et al. showed no de novo clinical cerebellar syndrome following repeated administrations of gadoterate (the same contrast agent used in our study) [36]. The clinical significance of the retained gadolinium, if any, remains unknown [37,38]. Furthermore, there is deposition of gadolinium in the vessel walls in autopsy specimens. However, there is no reactive pathologic changes despite high concentrations of gadolinium in dentate nuclei [39].

Certainly, there were few limitations in our study. The first limitation is that our study included a relatively small number of cases. The second limitation is that this was a retrospective study. The third limitation is that the confounding effects of therapy were not factored

in because radiation therapy contributes to increased T1 signal in the deep nuclei [12,13]. However, this appears to be irrelevant in our study because there were no subjective or objective increased T1 signal intensities.

It is noteworthy that this is the first study originating from the Middle East and the Gulf region that highlights the safety of a macrocyclic agent in terms of deposition in the brain.

Conclusion

Multiple contrast-enhanced MRI studies can be safely performed with intravenous administration of macrocyclic gadolinium agents with no risk of gadolinium deposition in the brain. Currently, the consensus recommendation is of caution and prevention while favoring macrocyclic agents specifically for pediatric patients. There is no clear evidence for the associated clinical sequela related to gadolinium deposition.

References

1. Kanda T, Osawa M, Oba H, Toyoda K, Kotoku J, Haruyama T, et al. High Signal Intensity in Dentate Nucleus on Unenhanced T1-weighted MR Images: Association with Linear versus Macrocyclic Gadolinium Chelate Administration. *Radiology*. 2015; 275: 803-809.
2. Kanda T, Ishii K, Kawaguchi H, Kitajima K, Takenaka D. High signal intensity in the dentate nucleus and globus pallidus on unenhanced T1-weighted MR images: relationship with increasing cumulative dose of a gadolinium-based contrast material. *Radiology*. 2014; 270: 834-841.
3. Olchowicz C, Cebulski K, Łasecki M, Chaber R, Olchowicz A, Kałwak K, et al. The presence of the gadolinium-based contrast agent depositions in the brain and symptoms of gadolinium neurotoxicity - A systematic review. *PLoS One*. 2017; 12: e0171704.
4. Quattrocchi CC, Mallio CA, Errante Y, Beomonte Zobel B. High T1 Signal Intensity in Dentate Nucleus after Multiple Injections of Linear Gadolinium Chelates. *Radiology*. 2015; 276: 616-617.
5. Ramalho J, Castillo M, AlObaidy M, Nunes RH, Ramalho M, Dale BM, et al. High Signal Intensity in Globus Pallidus and Dentate Nucleus on Unenhanced T1-weighted MR Images: Evaluation of Two Linear Gadolinium-based Contrast Agents. *Radiology*. 2015; 276: 836-844.
6. McDonald RJ, McDonald JS, Kallmes DF, Jentoft ME, Paolini MA, Murray DL, et al. Gadolinium Deposition in Human Brain Tissues after Contrast-enhanced MR Imaging in Adult Patients without Intracranial Abnormalities. *Radiology*. 2017; 285: 546-554.
7. Radbruch A, Weberling LD, Kieslich PJ, Eidel O, Burth S, Kickingereder P, et al. Gadolinium retention in the dentate nucleus and globus pallidus is dependent on the class of contrast agent. *Radiology*. 2015; 275: 783-791.
8. Moser FG, Watterson CT, Weiss S, Austin M, Mirocha J, Prasad R, et al. High Signal Intensity in the Dentate Nucleus and Globus Pallidus on Unenhanced T1-Weighted MR Images: Comparison between Gadobutrol and Linear Gadolinium-Based Contrast Agents. *AJNR Am J Neuroradiol*. 2018; 39: 421-426.
9. Robert P, Lehericy S, Grand S, Violas X, Fretellier N, Idée JM, et al. T1-Weighted Hypersignal in the Deep Cerebellar Nuclei After Repeated Administrations of Gadolinium-Based Contrast Agents in Healthy Rats: Difference Between Linear and Macrocyclic Agents. *Invest Radiol*. 2015; 50: 473-480.
10. Ozturk K, Nas OF, Soylu E, Hakyemez B. Signal Changes in the Dentate Nucleus and Globus Pallidus on Unenhanced T1-Weighted Magnetic Resonance Images After Intrathecal Administration of Macrocyclic Gadolinium Contrast Agent. *Invest Radiol*. 2018; 53: 535-540.

11. Kanda T, Fukusato T, Matsuda M, Toyoda K, Oba H, Kotoku J, et al. Gadolinium-based Contrast Agent Accumulates in the Brain Even in Subjects without Severe Renal Dysfunction: Evaluation of Autopsy Brain Specimens with Inductively Coupled Plasma Mass Spectroscopy. *Radiology*. 2015; 276: 228-232.
12. Tamrazi B, Nguyen B, Liu CJ, Azen CG, Nelson MB, Dhall G, et al. Changes in Signal Intensity of the Dentate Nucleus and Globus Pallidus in Pediatric Patients: Impact of Brain Irradiation and Presence of Primary Brain Tumors Independent of Linear Gadolinium-based Contrast Agent Administration. *Radiology*. 2018; 287: 452-460.
13. Kinner S, Schubert TB, Bruce RJ, Rebsamen SL, Diamond CA, Reeder SB, et al. Deep Brain Nuclei T1 Shortening after Gadobenate Dimeglumine in Children: Influence of Radiation and Chemotherapy. *AJNR Am J Neuroradiol*. 2018; 39: 24-30.
14. Radbruch A, Haase R, Kickingereder P, Bäumer P, Bickelhaupt S, Paech D, et al. Pediatric Brain: No Increased Signal Intensity in the Dentate Nucleus on Unenhanced T1-weighted MR Images after Consecutive Exposure to a Macrocytic Gadolinium-based Contrast Agent. *Radiology*. 2017; 283: 828-836.
15. Tibussek D, Rademacher C, Caspers J, Turowski B, Schaper J, Antoch G, et al. Gadolinium Brain Deposition after Macrocytic Gadolinium Administration: A Pediatric Case-Control Study. *Radiology*. 2017; 285: 223-230.
16. Flood TF, Stence NV, Maloney JA, Mirsky DM. Pediatric Brain: Repeated Exposure to Linear Gadolinium-based Contrast Material Is Associated with Increased Signal Intensity at Unenhanced T1-weighted MR Imaging. *Radiology*. 2017; 282: 222-228.
17. Rossi Espagnet MC, Bernardi B, Pasquini L, Figà-Talamanca L, Tomà P, Napolitano A. Signal intensity at unenhanced T1-weighted magnetic resonance in the globus pallidus and dentate nucleus after serial administrations of a macrocytic gadolinium-based contrast agent in children. *Pediatr Radiol*. 2017; 47: 1345-1352.
18. Roberts DR, Chatterjee AR, Yazdani M, Marebwa B, Brown T, Collins H, et al. Pediatric Patients Demonstrate Progressive T1-Weighted Hyperintensity in the Dentate Nucleus following Multiple Doses of Gadolinium-Based Contrast Agent. *AJNR Am J Neuroradiol*. 2016; 37: 2340-2347.
19. Hu HH, Pokorney A, Towbin RB, Miller JH. Increased signal intensities in the dentate nucleus and globus pallidus on unenhanced T1-weighted images: evidence in children undergoing multiple gadolinium MRI exams. *Pediatr Radiol*. 2016; 46: 1590-1598.
20. Kanal E. Gadolinium based contrast agents (GBCA): Safety overview after 3 decades of clinical experience. *Magn Reson Imaging*. 2016; 34: 1341-1345.
21. Huckle JE, Altun E, Jay M, Semelka RC. Gadolinium Deposition in Humans: When Did We Learn That Gadolinium Was Deposited In Vivo?. *Invest Radiol*. 2016; 51: 236-240.
22. Grobner T. Gadolinium--a specific trigger for the development of nephrogenic fibrosing dermopathy and nephrogenic systemic fibrosis?. *Nephrol Dial Transplant*. 2006; 21: 1104-1108.
23. High WA, Ayers RA, Cowper SE. Gadolinium is quantifiable within the tissue of patients with nephrogenic systemic fibrosis. *J Am Acad Dermatol*. 2007; 56: 710-712.
24. Radbruch A, Weberling LD, Kieslich PJ, Hepp J, Kickingereder P, Wick W, et al. High-Signal Intensity in the Dentate Nucleus and Globus Pallidus on Unenhanced T1-Weighted Images: Evaluation of the Macrocytic Gadolinium-Based Contrast Agent Gadobutrol. *Invest Radiol*. 2015; 50: 805-810.
25. Lee JY, Park JE, Kim HS, Kim SO, Oh JY, Shim WH, et al. Up to 52 administrations of macrocytic ionic MR contrast agent are not associated with intracranial gadolinium deposition: Multifactorial analysis in 385 patients. *PLoS One*. 2017; 12: e0183916.
26. Miller JH, Hu HH, Pokorney A, Cornejo P, Towbin R. MRI Brain Signal Intensity Changes of a Child During the Course of 35 Gadolinium Contrast Examinations. *Pediatrics*. 2015; 136: e1637-1640.
27. Zhang Y, Cao Y, Shih GL, Hecht EM, Prince MR. Extent of Signal Hyperintensity on Unenhanced T1-weighted Brain MR Images after More than 35 Administrations of Linear Gadolinium-based Contrast Agents. *Radiology*. 2017; 282: 516-525.
28. Radbruch A, Haase R, Kieslich PJ, Weberling LD, Kickingereder P, et al. No Signal Intensity Increase in the Dentate Nucleus on Unenhanced T1-weighted MR Images after More than 20 Serial Injections of Macrocytic Gadolinium-based Contrast Agents. *Radiology*. 2017; 282: 699-707.
29. Ichikawa S, Motosugi U, Omiya Y, Onishi H. Contrast Agent-Induced High Signal Intensity in Dentate Nucleus on Unenhanced T1-Weighted Images: Comparison of Gadodiamide and Gadoteric Acid. *Invest Radiol*. 2017; 52: 389-395.
30. Conte G, Preda L, Coccorocchio E, Raimondi S, Giannitto C, Minotti M, et al. Signal intensity change on unenhanced T1-weighted images in dentate nucleus and globus pallidus after multiple administrations of gadoxetate disodium: an intraindividual comparative study. *Eur Radiol*. 2017; 27: 4372-4378.
31. Cao Y, Huang DQ, Shih G, Prince MR. Signal Change in the Dentate Nucleus on T1-Weighted MR Images After Multiple Administrations of Gadopentetate Dimeglumine Versus Gadobutrol. *AJR Am J Roentgenol*. 2016; 206: 414-419.
32. Mithal LB, Patel PS, Mithal D, Palac HL, Rozenfeld MN. Use of gadolinium-based magnetic resonance imaging contrast agents and awareness of brain gadolinium deposition among pediatric providers in North America. *Pediatr Radiol*. 2017; 47: 657-664.
33. Rahatlil FK, Donmez FY, Kibaroglu S, Kesim C, Haberal KM, Turnaoglu H, et al. Does renal function affect gadolinium deposition in the brain?. *Eur J Radiol*. 2018; 104: 33-37.
34. Cao Y, Zhang Y, Shih G, Zhang Y, Bohmart A, Hecht EM, et al. Effect of Renal Function on Gadolinium-Related Signal Increases on Unenhanced T1-Weighted Brain Magnetic Resonance Imaging. *Invest Radiol*. 2016; 51: 677-682.
35. Barbieri S, Schroeder C, Froehlich JM, Pasch A, Thoeny HC. High signal intensity in dentate nucleus and globus pallidus on unenhanced T1-weighted MR images in three patients with impaired renal function and vascular calcification. *Contrast Media Mol Imaging*. 2016; 11: 245-250.
36. Perrotta G, Metens T, Absil J, Lemort M, Manto M. Absence of clinical cerebellar syndrome after serial injections of more than 20 doses of gadoterate, a macrocytic GBCA: a monocenter retrospective study. *J Neurol*. 2017; 264: 2277-2283.
37. Gulani V, Calamante F, Shellock FG, Kanal E, Reeder SB. Gadolinium deposition in the brain: summary of evidence and recommendations. *Lancet Neurol*. 2017; 16: 564-570.
38. Forslin Y, Shams S, Hashim F, Aspelin P, Bergendal G, Martola J, et al. Retention of Gadolinium-Based Contrast Agents in Multiple Sclerosis: Retrospective Analysis of an 18-Year Longitudinal Study. *AJNR Am J Neuroradiol*. 2017; 38: 1311-1316.
39. Fingerhut S, Sperling M, Holling M, Niederstadt T, Allkemper T, Radbruch A, et al. Gadolinium-based contrast agents induce gadolinium deposits in cerebral vessel walls, while the neuropil is not affected: an autopsy study. *Acta Neuropathol*. 2018; 136: 127-138.